

MONTHLY MEMBERSHIP PROGRESS REPORT

District 201N1

Results as of: 5/31/2024

GMT:

LOCATION AUSTRALIA

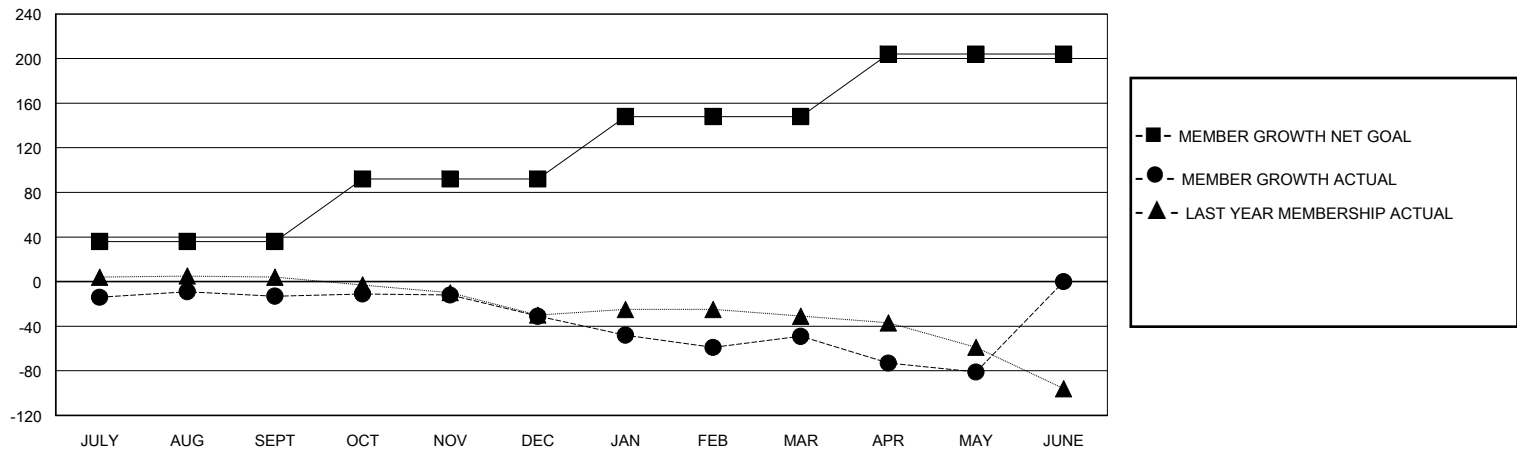
GMT CA

Clubs				Members			
RESULTS FOR 2023-2024				RESULTS FOR 2023-2024			
QUARTER	NEW CLUB GOAL	NEW CLUBS	DROPPED CLUBS	QUARTER	MEMBER GROWTH NET GOAL	MEMBER GROWTH ACTUAL	DROPPED MEMBERS ACTUAL (including transfers)
JULY/AUG/SEPT	0	0	3	JULY/AUG/SEPT	36	39	45
OCT/NOV/DEC	0	0	0	OCT/NOV/DEC	56	25	43
JAN/FEB/MAR	0	0	0	JAN/FEB/MAR	56	36	46
APR/MAY/JUNE	1	0	0	APR/MAY/JUNE	56	18	44

GOALS AND ACTUAL NEW CLUBS CUMULATIVE



GOALS AND ACTUAL MEMBERS CUMULATIVE



DROPPED CLUBS: 3	35 CLUBS OF 65 ADDED 1 OR MORE NEW MEMBERS	GENDER DISTRIBUTION MALE 796 (65.41%) FEMALE 421 (34.59%)
DROPPED MEMBERS DECEASED 20 CLUB CANCELLED 0 OTHER 158 TOTAL 178	CLICK HERE FOR CUMULATIVE MEMBERSHIP DATA	TOTAL FAMILY UNIT MEMBERS 143 FAMILY MEMBERS PAYING HALF DUES 74